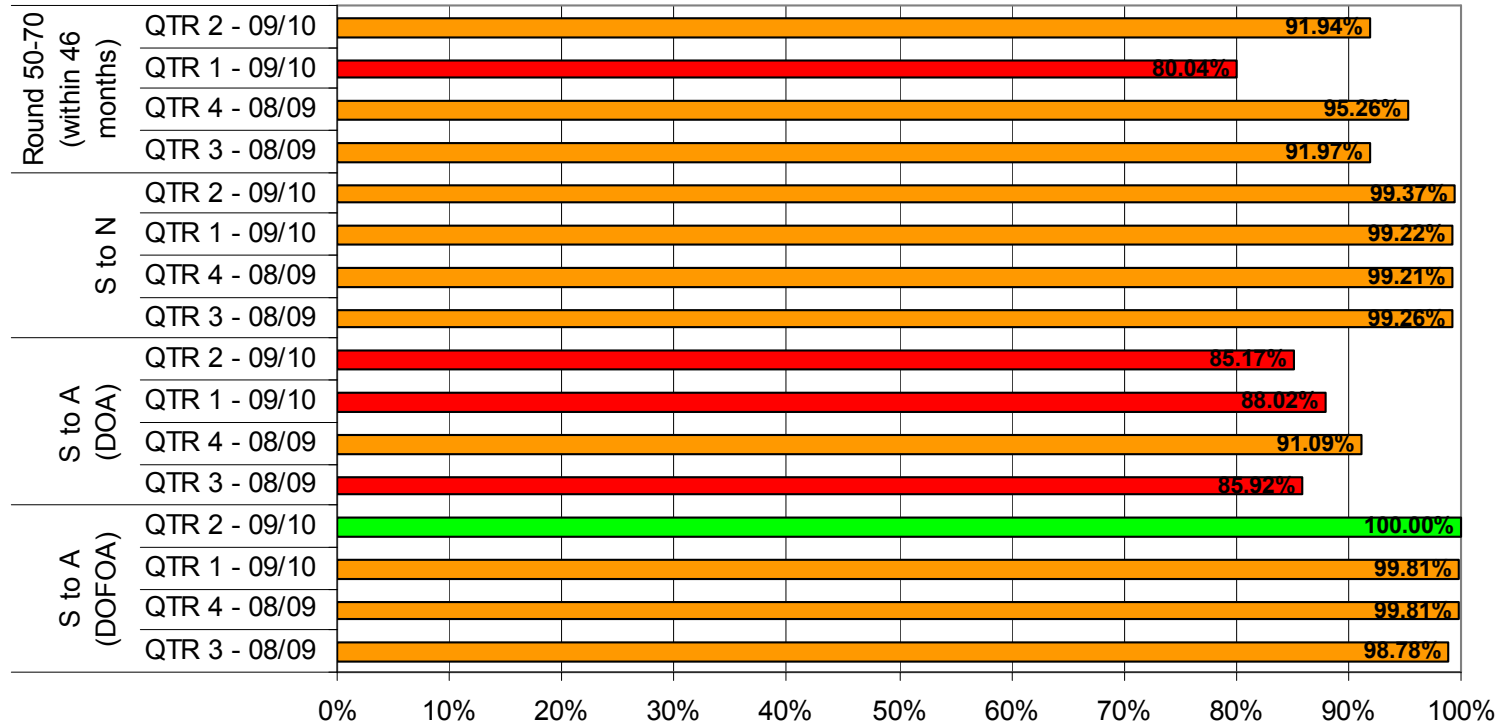


**Breast Screening Quarterly Performance Indicators  
London Breast Screening Units**

**(Q3-Q4 08/09 & Q1-Q2 09/10)**

## Breast Screening Quarterly Performance Indicators EBA (Q3-Q4 08/09 & Q1-Q2 09/10) North London Breast Screening Service

The NLBSS was temporarily suspended at the beginning of 2007. Therefore, the service cannot meet the National Minimum Standard of >90% within 36 months for Roundlength. They have set an internal target of >90% within 46 months, which has been set until October/November 2010.



### Technical repeats / recalls

QTR 3 - 08/09: **3.15%**

QTR 4 - 08/09: **2.81%**

QTR 1 - 09/10: **2.32%**

QTR 2 - 09/10: **1.67%**

### Intervals

QTR 3 - 08/09: New 0 Rev 0

QTR 4 - 08/09: New 0 Rev 0

QTR 1 - 09/10: New 11 Rev 45

QTR 2 - 09/10: New 16 Rev 44

### Open episodes

QTR 3 - 08/09: 100

QTR 4 - 08/09: 42

QTR 1 - 09/10: 77

QTR 2 - 09/10: 4

### Uptake 50-70

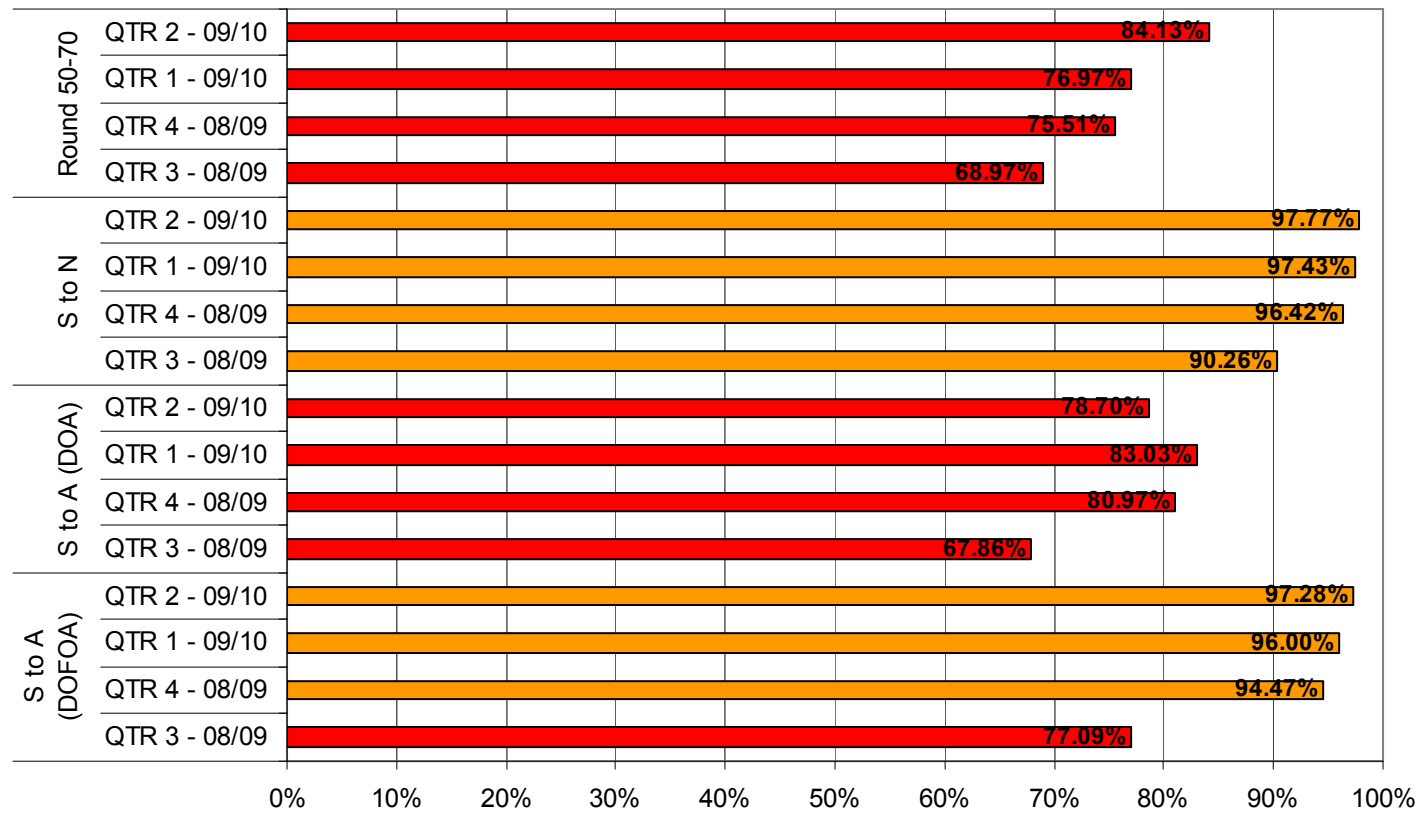
QTR 3 - 08/09: 59.07%

QTR 4 - 08/09: 57.97%

QTR 1 - 09/10: 61.26%

QTR 2 - 09/10: 58.23%

### Breast Screening Quarterly Performance Indicators London (Q3-Q4 08/09 & Q1-Q2 09/10)



#### Technical repeats / recalls

QTR 3 - 08/09: 2.74%  
 QTR 4 - 08/09: 2.46%  
 QTR 1 - 09/10: 1.99%  
 QTR 2 - 09/10: 1.82%

#### Intervals

QTR 3 - 08/09: New 65 Rev 227  
 QTR 4 - 08/09: New 147 Rev 163  
 QTR 1 - 09/10: New 32 Rev 158  
 QTR 2 - 09/10: New 46 Rev 105

#### Open episodes

QTR 3 - 08/09: 237  
 QTR 4 - 08/09: 218  
 QTR 1 - 09/10: 253  
 QTR 2 - 09/10: 126

#### Uptake 50-70

QTR 3 - 08/09: 59.02%  
 QTR 4 - 08/09: 59.66%  
 QTR 1 - 09/10: 62.27%  
 QTR 2 - 09/10: 59.41%

**Breast Screening Quarterly Performance Indicators ECX (Q3-Q4 08/09 & Q1-Q2 09/10)**  
**West London Breast Screening Service**



**Technical repeats / recalls**

QTR 3 - 08/09: 1.58%  
 QTR 4 - 08/09: 1.39%  
 QTR 1 - 09/10: 1.48%  
 QTR 2 - 09/10: 1.84%

**Intervals**

QTR 3 - 08/09: New 3 Rev 136  
 QTR 4 - 08/09: New 109 Rev 122  
 QTR 1 - 09/10: New 6 Rev 45  
 QTR 2 - 09/10: New 2 Rev 0

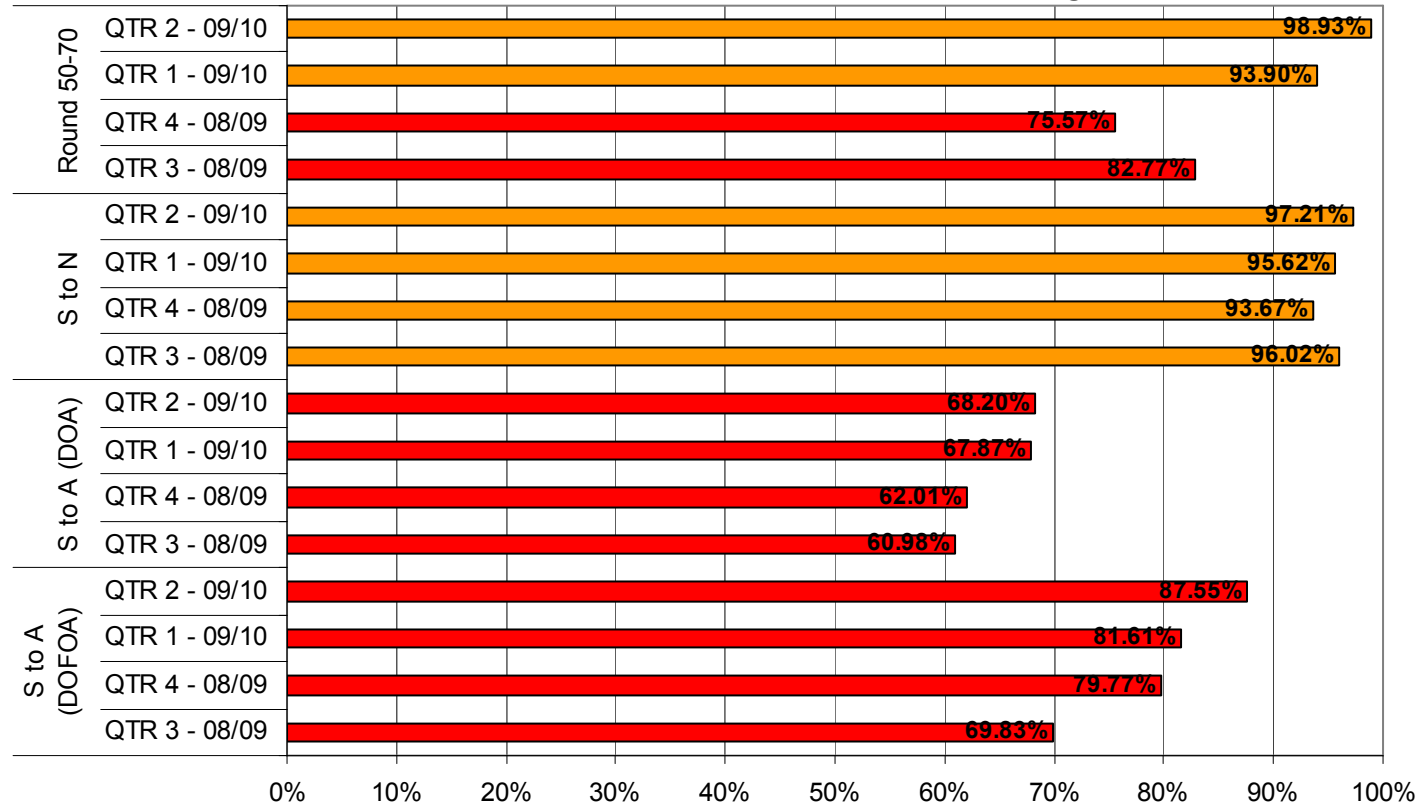
**Open episodes**

QTR 3 - 08/09: 0  
 QTR 4 - 08/09: 0  
 QTR 1 - 09/10: 0  
 QTR 2 - 09/10: 0

**Uptake 50-70**

QTR 3 - 08/09: 52.71%  
 QTR 4 - 08/09: 54.26%  
 QTR 1 - 09/10: 59.08%  
 QTR 2 - 09/10: 53.52%

**Breast Screening Quarterly Performance Indicators FLO (Q3-Q4 08/09 & Q1-Q2 09/10)**  
**Central & East London Breast Screening Service**



**Technical repeats / recalls**

QTR 3 - 08/09: 2.83%  
 QTR 4 - 08/09: 3.32%  
 QTR 1 - 09/10: 1.71%  
 QTR 2 - 09/10: 2.27%

**Intervals**

QTR 3 - 08/09: New 6 Rev 9  
 QTR 4 - 08/09: New 8 Rev 11  
 QTR 1 - 09/10: New 1 Rev 24  
 QTR 2 - 09/10: New 4 Rev 6

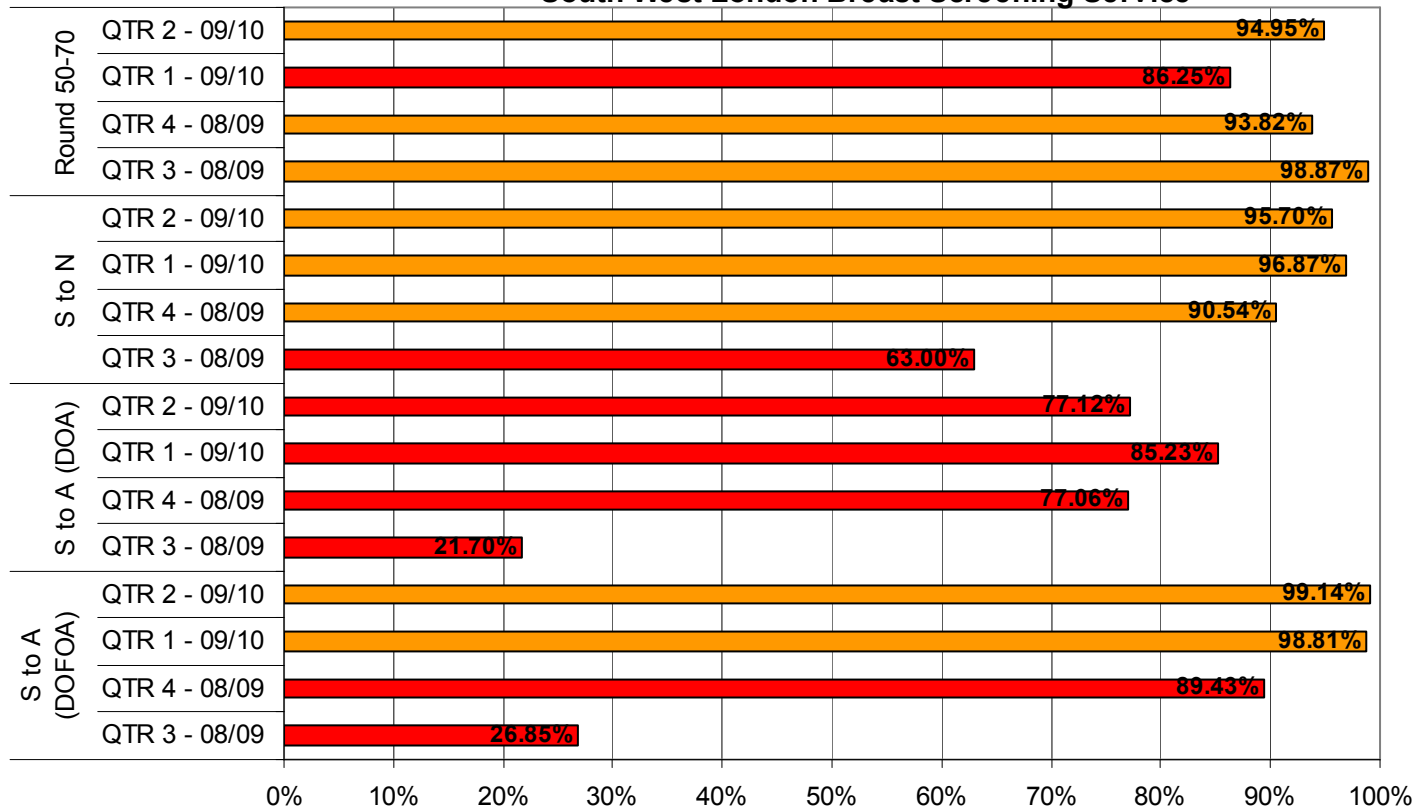
**Open episodes**

QTR 3 - 08/09: 44  
 QTR 4 - 08/09: 53  
 QTR 1 - 09/10: 70  
 QTR 2 - 09/10: 53

**Uptake 50-70**

QTR 3 - 08/09: 51.43%  
 QTR 4 - 08/09: 52.91%  
 QTR 1 - 09/10: 52.06%  
 QTR 2 - 09/10: 51.63%

**Breast Screening Quarterly Performance Indicators HWA (Q3-Q4 08/09 & Q1-Q2 09/10)**  
**South West London Breast Screening Service**



**Technical repeats / recalls**

QTR 3 - 08/09: **3.36%**  
 QTR 4 - 08/09: **3.24%**  
 QTR 1 - 09/10: **3.31%**  
 QTR 2 - 09/10: **2.70%**

**Intervals**

QTR 3 - 08/09: New 11 Rev20  
 QTR 4 - 08/09: New 0 Rev0  
 QTR 1 - 09/10: New 7 Rev19  
 QTR 2 - 09/10: New 0 Rev6

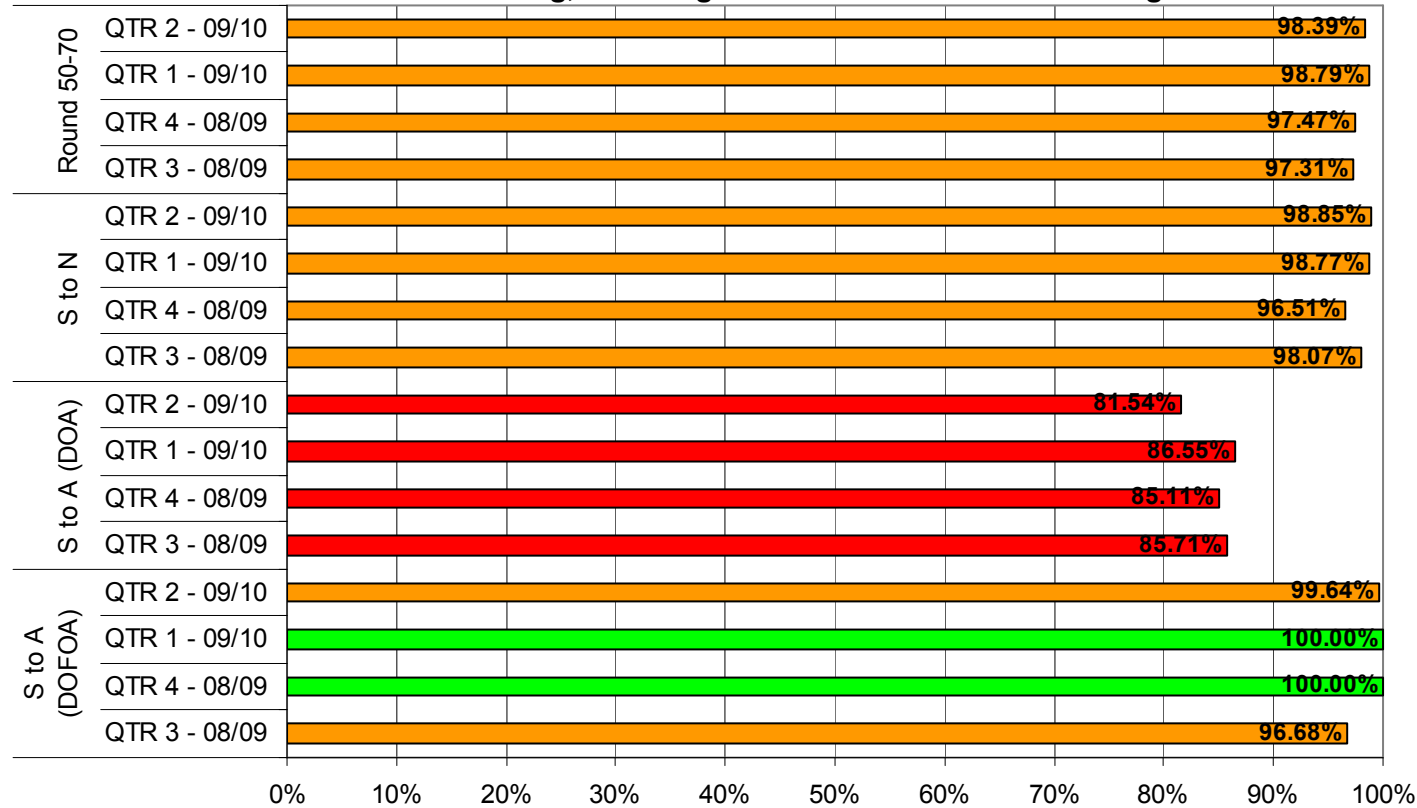
**Open episodes**

QTR 3 - 08/09: 0  
 QTR 4 - 08/09: 21  
 QTR 1 - 09/10: 14  
 QTR 2 - 09/10: 12

**Uptake 50-70**

QTR 3 - 08/09: 61.40%  
 QTR 4 - 08/09: 63.17%  
 QTR 1 - 09/10: 62.97%  
 QTR 2 - 09/10: 62.41%

**Breast Screening Quarterly Performance Indicators FBH (Q3-Q4 08/09 & Q1-Q2 09/10)**  
**Barking, Havering & Brentwood Breast Screening Service**



**Technical repeats / recalls**

QTR 3 - 08/09: 2.94%  
 QTR 4 - 08/09: 1.78%  
 QTR 1 - 09/10: 1.87%  
 QTR 2 - 09/10: 1.36%

**Intervals**

QTR 3 - 08/09: New 38 Rev22  
 QTR 4 - 08/09: New 25 Rev0  
 QTR 1 - 09/10: New NS RevNS  
 QTR 2 - 09/10: New 12 Rev6

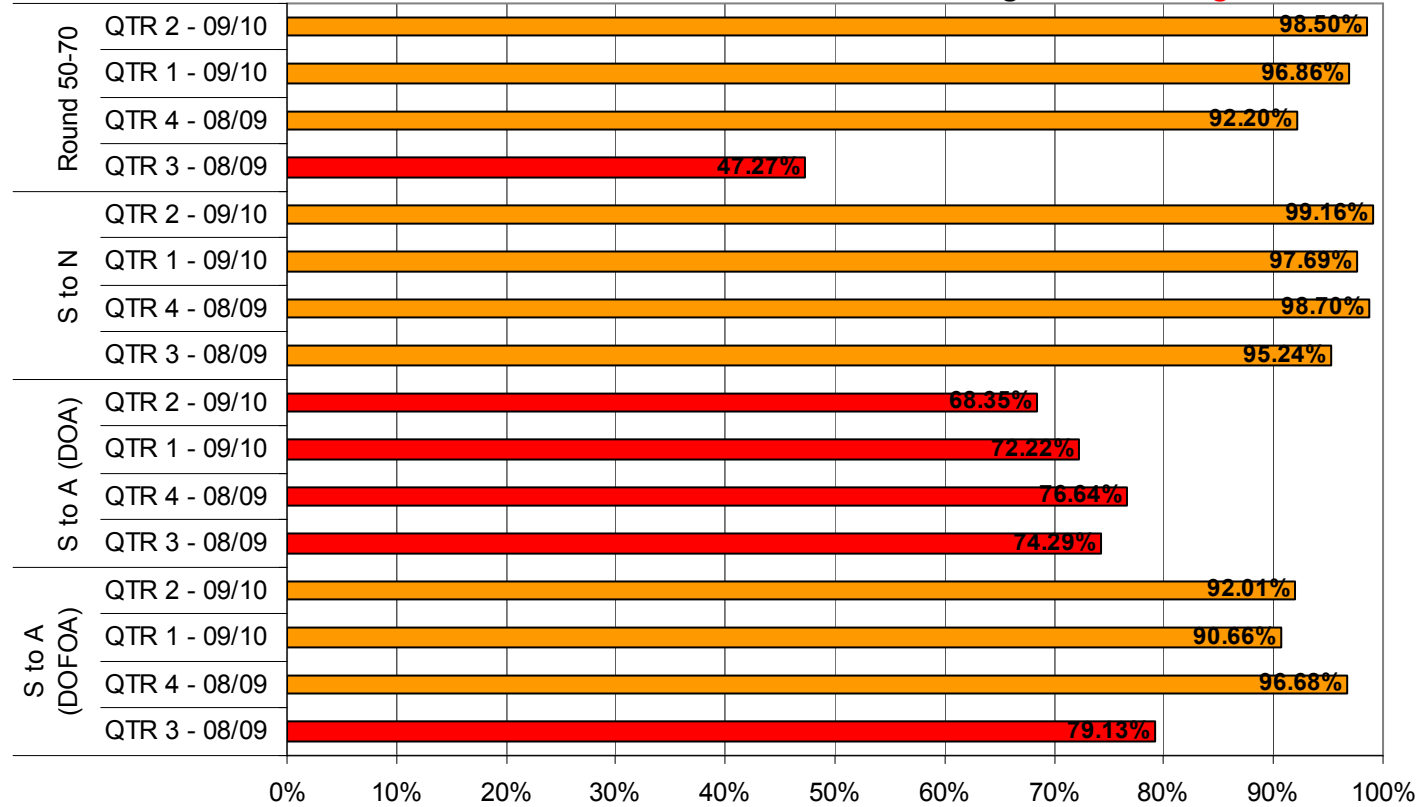
**Open episodes**

QTR 3 - 08/09: 12  
 QTR 4 - 08/09: 8  
 QTR 1 - 09/10: NS  
 QTR 2 - 09/10: 12

**Uptake 50-70**

QTR 3 - 08/09: 76.58%  
 QTR 4 - 08/09: 67.09%  
 QTR 1 - 09/10: 78.56%  
 QTR 2 - 09/10: 70.48%

**Breast Screening Quarterly Performance Indicators GCA1 (Q3-Q4 08/09 & Q1-Q2 09/10)**  
**South East London Breast Screening Service - King's**



**Technical repeats / recalls**

QTR 3 - 08/09: 2.25%  
 QTR 4 - 08/09: 2.06%  
 QTR 1 - 09/10: 1.42%  
 QTR 2 - 09/10: 1.11%

**Intervals**

QTR 3 - 08/09: New 4	Rev 25
QTR 4 - 08/09: New 3	Rev 20
QTR 1 - 09/10: New 5	Rev 15
QTR 2 - 09/10: New 2	Rev 20

**Open episodes**

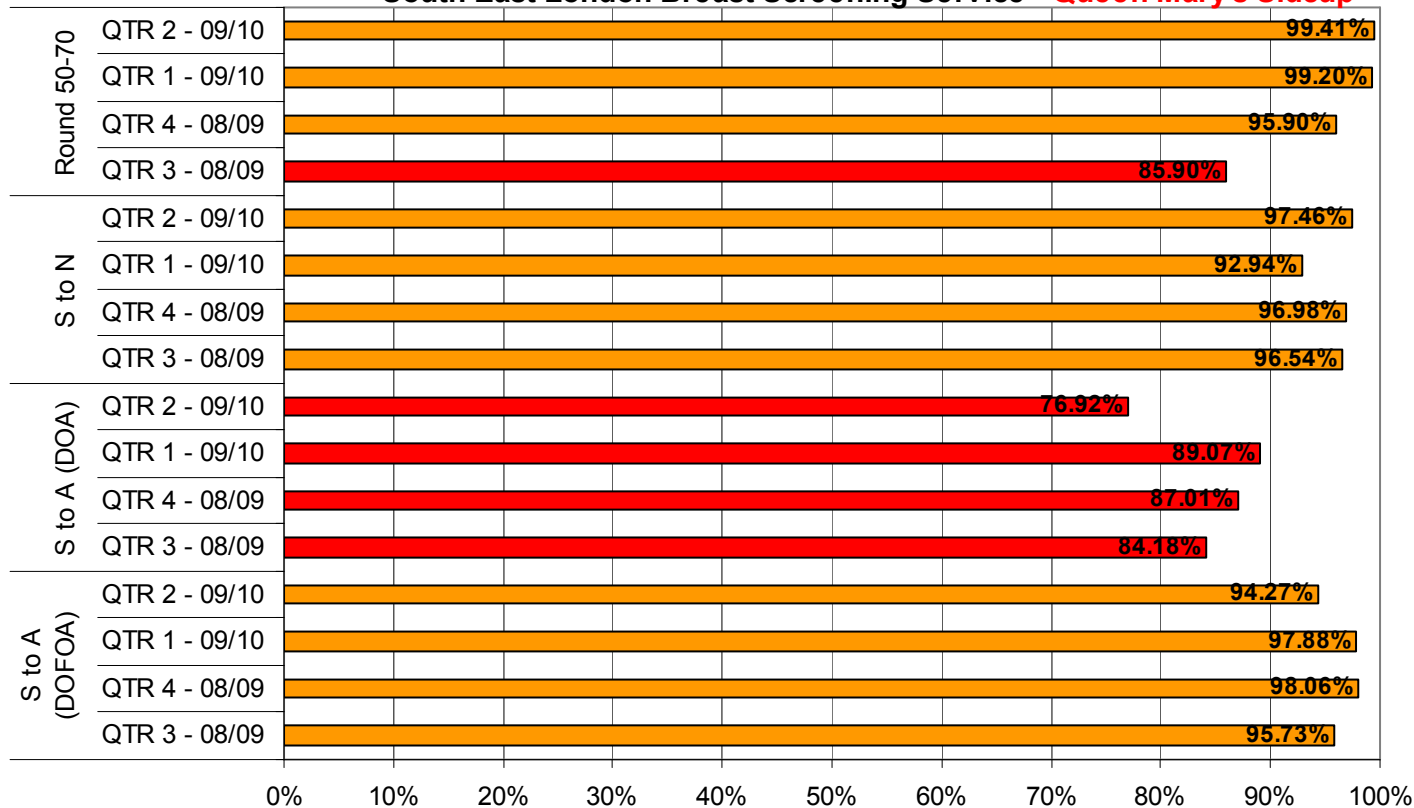
QTR 3 - 08/09: 69  
 QTR 4 - 08/09: 79  
 QTR 1 - 09/10: 64  
 QTR 2 - 09/10: 42

**Uptake 50-70**

QTR 3 - 08/09: 56.50%  
 QTR 4 - 08/09: 61.28%  
 QTR 1 - 09/10: 61.87%  
 QTR 2 - 09/10: 60.46%



**Breast Screening Quarterly Performance Indicators GCA2 (Q3-Q4 08/09 & Q1-Q2 09/10)**  
**South East London Breast Screening Service - Queen Mary's Sidcup**



**Technical repeats / recalls**

QTR 3 - 08/09: 1.93%  
 QTR 4 - 08/09: 1.76%  
 QTR 1 - 09/10: 1.29%  
 QTR 2 - 09/10: 1.74%

**Intervals**

QTR 3 - 08/09: New 3	Rev 15
QTR 4 - 08/09: New 2	Rev 10
QTR 1 - 09/10: New 2	Rev 10
QTR 2 - 09/10: New 10	Rev 29

**Open episodes**

QTR 3 - 08/09: 12  
 QTR 4 - 08/09: 15  
 QTR 1 - 09/10: 28  
 QTR 2 - 09/10: 3

**Uptake 50-70**

QTR 3 - 08/09: 64.20%  
 QTR 4 - 08/09: 73.70%  
 QTR 1 - 09/10: 75.22%  
 QTR 2 - 09/10: 71.31%